

Алматы (7273)495-231
Ангарск (3955)60-70-56
Архангельск (8182)63-90-72
Астрахань (8512)99-46-04
Барнаул (3852)73-04-60
Белгород (4722)40-23-64
Благовещенск (4162)22-76-07
Брянск (4832)59-03-52
Владивосток (423)249-28-31
Владикавказ (8672)28-90-48
Владимир (4922) 49-43-18
Волгоград (844)278-03-48
Вологда (8172)26-41-59
Воронеж (473)204-51-73
Екатеринбург (343)384-55-89

Ижевск (3412)26-03-58
Иваново (4932)77-34-06
Иркутск (395)279-98-46
Казань (843)206-01-48
Калининград (4012)72-03-81
Калуга (4842)92-23-67
Кемерово (3842)65-04-62
Киров (8332)68-02-04
Коломна (4966)23-41-49
Кострома (4942)77-07-48
Краснодар (861)203-40-90
Красноярск (391)204-63-61
Курск (4712)77-13-04
Курган (3522)50-90-47
Липецк (4742)52-20-81

Магнитогорск (3519)55-03-13
Москва (495)268-04-70
Мурманск (8152)59-64-93
Набережные Челны (8552)20-53-41
Нижний Новгород (831)429-08-12
Новокузнецк (3843)20-46-81
Ноябрьск (3496)41-32-12
Новосибирск (383)227-86-73
Ноябрьск (3496)41-32-12
Омск (3812)21-46-40
Орел (4862)44-53-42
Оренбург (3532)37-68-04
Пенза (8412)22-31-16
Петрозаводск (8142)55-98-37
Псков (8112)59-10-37

Пермь (342)205-81-47
Ростов-на-Дону (863)308-18-15
Рязань (4912)46-61-64
Самара (846)206-03-16
Саранск (8342)22-96-24
Санкт-Петербург (812)309-46-40
Саратов (845)249-38-78
Севастополь (8692)22-31-93
Симферополь (3652)67-13-56
Смоленск (4812)29-41-54
Сочи (862)225-72-31
Ставрополь (8652)20-65-13
Сыктывкар (8212)25-95-17
Сургут (3462)77-98-35
Тамбов (4752)50-40-97

Тверь (4822)63-31-35
Тольяти (8482)63-91-07
Томск (3822)98-41-53
Тула (4872)33-79-87
Тюмень (3452)66-21-18
Улан-Удэ (3012)59-97-51
Ульяновск (8422)24-23-59
Уфа (347)229-48-12
Хабаровск (4212)92-98-04
Чебоксары (8352)28-53-07
Челябинск (351)202-03-61
Череповец (8202)49-02-64
Чита (3022)38-34-83
Якутск (4112)23-90-97
Ярославль (4852)69-52-93

Киргизия (996)312-96-26-47

Россия (495)268-04-70

Казахстан (772)734-952-31

<https://parsun.nt-rt.ru> || pus@nt-rt.ru

КАТАЛОГ





PARSUN plant has been accredited as “High-Tech Enterprise” and PARSUN outboard motors have been accredited as “High-Tech Products” by China government. Reliability is our first concern. We design and source globally to ensure high standard and dependable products.

PARSUN is the only outboards manufacturer that went public on China main stock exchange. The stock code is 002611 under Eastern Precision Group companies.

Each new model of outboard motor has passed over 500 hours of rigorous endurance testing, before commencement of mass production.

Each outboard has been tested for at least 1 hour before it goes off production line. Our outboard motors meet the current US EPA and Europe CE standards.

The PARSUN brand is registered in China, US, Canada and over 100 other countries.

PARSUN has provided outboard motors for government projects, NGO and militaries. For instance, we supplied to UN aid projects for African countries, UK Navy, the Ground Forces of the Russian Federation and the Indonesian National Armed Forces, etc.

Suzhou Parsun Power Machine Co., Ltd. was founded in 2001 in Suzhou, China. Our core technology team’s collective experience dated back to 1968, including working with OMC (the original manufacturer of Johnson and Evinrude) in the development of integral components for high power outboard engines in the late 1990’s.



Excellent starting

PARSUN EFI outboard motor can be started from very hot to very cold ambient temperatures, from sea level to high altitude and from engine temperatures that range from cold to hot.

Less fuel consumption & Lower emissions

PARSUN EFI system delivers the exact air/fuel ratio to the engine by activating the injectors for the precise amount of time.

Ultimate corrosion protection system

Highly anti-corrosive paint system provides a five-layer painting against corrosion.

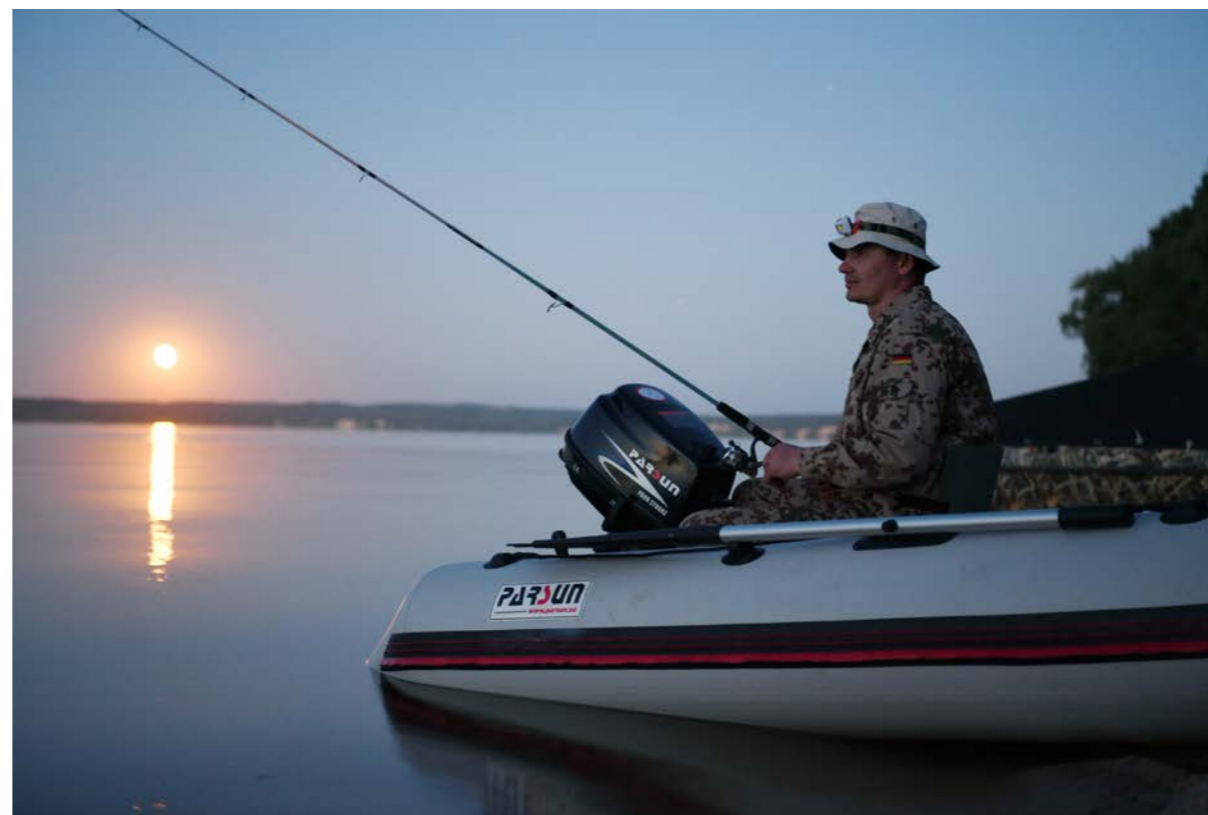
Multiple sacrificial anodes throughout the motor provide protection from the elements.



PARSUN EFI outboard motor provides excellent fuel economy, easy start, slower trolling speed, quick throttle response, lower emission and very smooth rides on the water. It is easy to install and gives less weight for your boat to haul around.

More intelligence

PARSUN EFI outboard motor control unit (ECU) is the brain of the EFI engine and the reason for many advantages of EFI.



Features

1. Built-in freshwater flushing system provides easy routine flushing.
2. High output 18 amp alternator facilitates battery charging and fishing electronics.
3. Power trim & tilt or hydraulic system makes the engine operating more easily.
4. Magnetic drain plug for replacing oil easily.
5. Engine RPM meter, boat speed meter, battery voltage meter and tilt & trim angle meter are available at option.
6. Reliable Delphi E.F.I. multifunction diagnostic scanner (available at option).



Multi-function tillers as option

The following functions are included as option: engine ignition switch, emergency stop switch, power tilt & trim switch, throttle friction adjuster, shift level, etc..

Battery-less electronic fuel injection

6HP and 20HP EFI engines do not need battery to start.



4-Stroke Outboards

and reliability as our large displacement outboards.

Benefits

1. Spiral bevel gear, stronger, runs more quietly and can be used for higher reduction ratios with longer life.
2. High - strength clutch, more reliability and better performance.
3. Ball bearings and needle bearings for driver shaft offer long life and better performance.
4. Oil watch window besides oil dip-stick, provides easier observation.
5. Wet-sump and forced bath lubrication system protect the engine better.



The PARSUN 4-stroke portable outboard engines boast muscular performance despite being light in weight for their classes. Whether fishing a favorite point or taking a leisurely weekend cruise these outboard engines are a delight to use.

PARSUN 4-stroke portable outboard motors feature greater flexibility and durability. What sets PARSUN portable four-strokes apart from the competition is not just their light weight and compactness but the fact that they have the same renowned PARSUN quality technology



4-Stroke Outboards

8.Warning systems for engine protection and safety.

9.Position oil leak-free storage system: oil leak-free storage system offers an easy way to store your engine, whether you're carrying it in a boat, a car, or a trailer.



Features

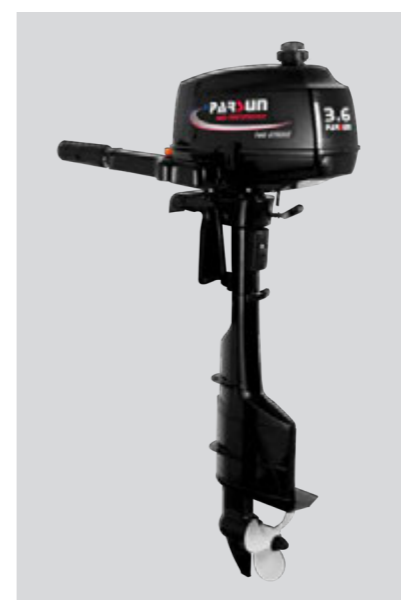
- 1.Ultra low emission, CE and EPA approved.
- 2.Exhaust through the middle of propeller so as to get low noise and low vibration.
- 3.Innovative CDI/TCI ignition system for easy starting.
- 4.High-output alternator provides extra starting power.
- 5.Manual / electric start and remote control as options.
- 6.Tilt & trim with shallow water drive various positions.
- 7.'Start-in-gear' prevention avoids accidental starting when in gear.



2-stroke Outboards

2-stroke outboards feature smaller displacement, more power and less weight! They are easier for maintenance, and maintain excellent performance and reliability for your long days of boating.

All of truly portable models offer an incredible horsepower-to-weight ratio. Whatever your boating application, these are the ultimate outboards for convenience, reliability and portability.



PARSUN 2-stroke outboard motors are embedded with design ideas, innovative features and satisfactory performance. These outboards are available in a range of horsepowers to fit a variety of applications. 2-stroke outboard motors are designed with your convenience in mind, featuring carrying handles and resting pads for easy transport and horizontal storage.



2-Stroke Outboards

- 6. Start in gear protection for increased safety.
- 7. Adjustable maneuverability friction for easier generating.
- 8. CDI ignition generating automatic spark advance to provide maximum power throughout the whole RPM range.



Features

- 1. High grade marine aluminum alloy for ultimate corrosion protection.
- 2. Tilt & trim with shallow water drive various positions, an extremely useful feature when tackling rivers, estuaries and creeks.
- 3. Thermostat controlled water cooling system.
- 4. Safety lanyard with emergency shut off.
- 5. Vibration reduction system for smooth performance.

Heavy-duty Outboards

make PARSUN heavy-duty outboard motors highly durable and reliable.

Having passed the rigid trial tests, PARSUN heavy duty 2-stroke outboard motors offer unbeatable value for money, outstanding power and fuel economy, and great performance.

Benefits

- 1.Safety: Engine safety stop lanyard with emergency shut off switch for stopping the engine immediately.
- 2.Reliable electric starter: To get a quick and easy start every time.
- 3.Lighting coil: 12V DC output allows you to run a spotlight.



PARSUN heavy-duty outboards series are designed and built to withstand the hard work for long continuous hours all day, and to meet the most demanding boaters who use the outboard motor on fishing and passenger boats.

The enhanced strength of roller bearings, crankshaft, piston & piston ring and crankcase, together with a better water cooling system, combines to



Heavy-duty Outboards

causing damage to the gears.

4. Cylinders design which stands the endurance test and is proven to be powerful, efficient and reliable.

5. CDI ignition system to provide automatic spark and maximum power for engine.

6. Loop charging fuel intake delivers great fuel economy, and smooth and responsive acceleration.

7. Thermostat controlled water cooling system.

8. Vibration reduction system for smooth performance.

9. Include 24L portable fuel tank with fuel hose, remote control, basic instruments and tool kits.



Features

1. The outboard can be set at a tilt angle, preventing it from hitting the bottom when operating in shallow water.

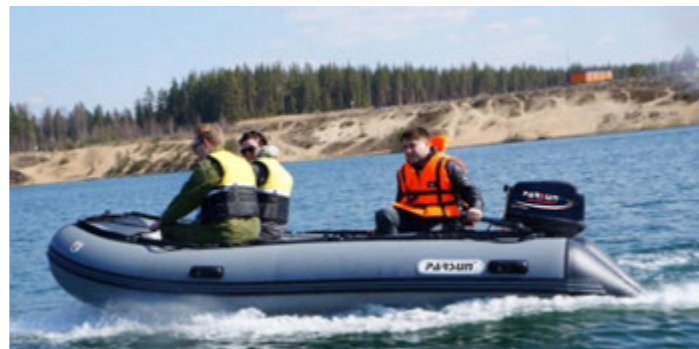
2. Extremely durable crankshaft, long life piston/piston ring, sturdy gears and gear case to get the excellent reliability.

3. Drain plug magnetized to collect any metallic particles in the gear oil to keep them from



Jet Outboards

- 3. Excellent horsepower-to-weight ratio.
- 4. High performance and easy operation.
- 5. Vibration reduction system for smooth performance.
- 6. Safe and reliable, whereby no moving parts of jet allows for operation in water if people should come in contact with the lower unit.



JET 4-stroke			
Item	FP2	FP15	FP20
Max. Power	2HP / 1.4Kw	15HP / 11Kw	20HP / 14.7Kw
Max. RPM Range	5500 ~ 6500	4500 ~ 5500	5000 ~ 6000
Idling RPM Range	2000	900 ~ 1000	1000 ~ 1100
Cylinders	1	L2	L2
Displacement	52cc	323cc	362cc
Bore × stroke	44.0×34.0mm 1.73×1.34in.	59.0×59.0mm 2.32×2.32in.	63.0×58.1mm 2.48×2.29in.
Ignition system	T.C.I.	C.D.I.	C.D.I.
Control system	Tiller control	Tiller control	Tiller control
Starting system	Manual start	Manual start	Manual start
Trim and tilt system	Manual tilt	Manual tilt	Manual tilt
Fuel tank capacity	Build-in 1L	24L	24L
Weight	8kg	53kg	56kg

1. Where no gear box and propped outboard, a jet drive allows you without worrying about breaking a prop on rocks and other underwater obstructions.

2. Don't limit your hunting and fishing locations. You can reach waters that are difficult to reach with a propeller-driven outboard.



JET 2-stroke			
Item	TP15	TP25	TP30
Max. Power	15HP / 11Kw	25HP / 18.4Kw	30HP / 22Kw
Max. RPM Range	4500 ~ 5500	4500 ~ 5500	4500 ~ 5500
Idling RPM Range	950 ~ 1050	1050 ~ 1150	1050 ~ 1150
Cylinders	L2	L2	L2
Displacement	246cc	496cc	496cc
Bore × stroke	56.0×50.0mm 2.20×1.97in.	72.0×61.0mm 2.83×2.40in.	72.0×61.0mm 2.83×2.40in.
Ignition system	C.D.I.	C.D.I.	C.D.I.
Control system	Tiller control	Tiller control	Tiller control
Starting system	Manual start	Manual start	Manual start
Trim and tilt system	Manual tilt	Manual tilt	Manual tilt
Fuel tank capacity	24L	24L	24L
Weight	36kg	63kg	63kg

Electric Outboards

two electric outboard motors can be used in parallel.

Features

- 1.No emission of pollutant at all, meeting the environmental requirements of low-carbon; smooth running and low noise.
- 2.More reliability and longer life because of water-cooled electrical motor and controller; Centralized control and easy operation.
- 3.Multiple protections, such as over-speed protection, overload protection, temperature protection, over-voltage and over-current protection.
- 4.Remote control system as the option, which is very suitable for sightseeing boats.



With the development of the new technology and increasingly stringent environmental requirements, in order to satisfy clients more, electric outboard motor is designed to be clean and quiet for environmentally sensitive waters.

Compared with traditional gasoline outboard engine, it provides plenty of power for trolling and propulsion. And it has the conventional outboards construction and design, which provides trustworthy reliability. If needed,



PARSUN offers a wide range of outboard accessories to meet the different needs of customers;

All accessories have been rigorously tested by PARSUN and are the best choice for satisfying customers' demanding applications.



9L fuel tank



12L fuel tank



24L fuel tank



Water pump kits



Propeller



Carburetor



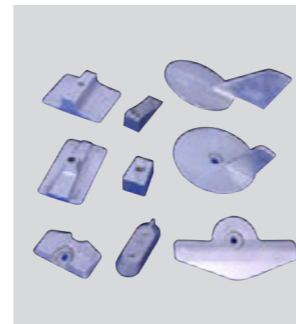
Remote-control box



40hp power trim



85hp power trim



Anode



Engine oil filter



Starter motor



Remote-control cable



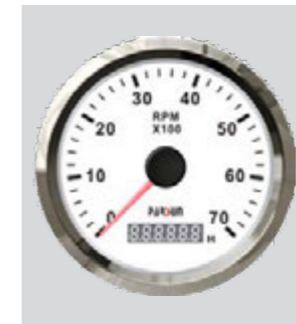
Fuel filter



Fuel hose



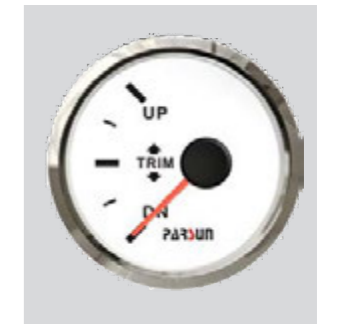
Fuel water separator



RPM gauge



Steering wheel assy



Tilt gauge

E.F.I. Outboards

Model	F60	F50	F40	F30	F20	F6
Max. Power	60HP/44.1Kw	50HP/36.8Kw	40HP/29.4Kw	30HP/22Kw	20HP/14.7Kw	6HP/4.4Kw
Engine type	4-cyl. SOHC	4-cyl. SOHC	3-cyl. SOHC	3-cyl. SOHC	2-cyl. SOHC	1-cyl. OHV
Displacement	996cc	996cc	747cc	747cc	362cc	148cc
Bore x Stroke	65.0x75.0mm 2.56x2.95in.	65.0x75.0mm 2.56x2.95in.	65.0x75.0mm 2.56x2.95in.	65.0x75.0mm 2.56x2.95in.	63.0x58.1mm 2.48x2.29in.	64.0x46.0mm 2.52x1.8in.
Max. RPM Range	5000~6000	5000~6000	5000~6000	5000~6000	5000~6000	4500~5500
Idling RPM Range	750~850	750~850	900~1000	900~1000	1000~1100	1450~1550
Sump Oil Capacity	2.5L	2.5L	1.7L	1.7L	1.6L	0.5L
Ignition Timing	Micro Computer	Micro Computer	Micro Computer	Micro Computer	Micro Computer	Micro Computer
Starting System	Electric	Electric	Electric+Manual or Electric	Electric+Manual or Electric	Electric+Manual or Manual	Manual
Steering System	Tiller or Remote	Tiller or Remote	Tiller or Remote	Tiller or Remote	Tiller or Remote	Tiller
Trim and Tilt	Gas assist or Electric	Gas assist or Electric	Gas assist or Electric	Gas assist or Electric	Manual	Manual
Gear Shift	F-N-R	F-N-R	F-N-R	F-N-R	F-N-R	F-N-R
Gear Ratio	1.85	1.85	2.0	2.0	1.85	2.15
Gear Oil Capacity	430cc	430cc	430cc	430cc	250cc	195cc
Transom Height	20in.	20in.	15in. or 20in.	15in. or 20in.	15in. or 20in.	15in. or 20in.
Dry Weight*	113kg	113kg	94kg	94kg	51.7kg	27kg
Alternator Output*	12V, 25A	12V, 25A	12V, 25A	12V, 25A	12V, 6A	12V, 6A
Fuel Tank	24L	24L	24L	24L	24L	Build-in 1.3L
Propeller* (pitch)	12", 13"	12", 13"	12", 13"	12", 13"	8", 10", 11", 12"	9"

*Vary on models

Four-stroke Outboards

Model	F25	F20A	F15	F9.8	F6A	F5	F4	F2.6
Max. Power	25HP/18.4Kw	20HP/14.7Kw	15HP/11Kw	9.8HP/7.2Kw	6HP/4.4Kw	5HP/3.6Kw	4HP/2.9Kw	2.6HP/1.9Kw
Engine type	2-cyl. SOHC	2-cyl. SOHC	2-cyl. SOHC	2-cyl. SOHC	1-cyl. OHV	1-cyl. OHV	1-cyl. OHV	1-cyl. OHV
Displacement	498cc	362cc	323cc	209cc	148cc	112cc	112cc	72cc
Bore x Stroke	65.0x75.0mm 2.56x2.95in.	63.0x58.1mm 2.48x2.29in.	59.0x59.0mm 2.32x2.32in.	55.0x44.0mm 2.17x1.73in.	64.0x46.0mm 2.52x1.8in.	59.0x41.0mm 2.32x1.61in.	59.0x41.0mm 2.32x1.61in.	54.0x31.5mm 2.13x1.241in.
Max. RPM Range	5000~6000	5000~6000	4500~5500	5000~6000	4500~5500	4000~5000	4000~5000	5250~5750
Idling RPM Range	950~1050	1000~1100	1000~1100	900~1000	1450~1550	1500~1600	1500~1600	1550~1650
Sump Oil Capacity	1.7L	1.6L	1.0L	0.8L	0.8L	0.5L	0.5L	0.35L
Ignition System	C.D.I	C.D.I	C.D.I	C.D.I	C.D.I	T.C.I.	T.C.I.	T.C.I.
Starting System	Electric+Manual Or Manual	Electric+Manual Or Manual	Electric+Manual Or Manual	Electric+Manual Or Manual	Manual	Manual	Manual	Manual
Steering System	Tiller or Remote	Tiller or Remote	Tiller or Remote	Tiller or Remote	Tiller	Tiller	Tiller	Tiller
Trim and Tilt	Manual or Electric	Manual	Manual	Manual	Manual	Manual	Manual	Manual
Gear Shift	F-N-R	F-N-R	F-N-R	F-N-R	F-N-R	F-N-R	F-N-R	F-N
Gear Ratio	2.08	2.08	2.08	2.08	2.15	2.08	2.08	2.08 or 2.25
Gear Oil Capacity	320cc	250cc	250cc	320cc	195cc	100cc	100cc	75cc
Transom Height	15in. or 20in.	15in. or 20in.	15in. or 20in.	15in. or 20in.	15in. or 20in.	15in. or 20in.	15in. or 20in.	15in. or 20in.
Dry Weight*	66kg	51.7kg	49kg	38kg	27kg	24.5kg	24.5kg	17kg
Alternator Output*	12V, 6A	12V, 6A	12V, 6A	12V, 6A	12V, 6A	None	None	None
Fuel Tank	24L	24L	24L	12L	Build-in 1.3L	Build-in 1.3L	Build-in 1.3L	Build-in 1.2L
Propeller* (pitch)	11.25" or 12"	8", 10", 11", 12"	8", 10", 11", 12"	8.3"	9"	6" or 7"	6" or 7"	6" or 5.38"

*Vary on models

Heavy-duty Outboards

Model	T75	T60A	T40J	T40G	T25	TE15	TE5
Max. Power	75HP/55.2Kw	60HP/44.1Kw	40HP/29.4Kw	40HP/29.4Kw	25HP/18.4Kw	15HP/11Kw	5HP/3.6Kw
Engine type	3-cyl.	3-cyl.	2-cyl.	2-cyl.	2-cyl.	2-cyl.	1-cyl.
Displacement	1141cc	849cc	669cc	669cc	496cc	246cc	102cc
Bore x Stroke	82.0x72.0mm 3.23x2.83in.	72.0x69.5mm 2.8x2.7in.	78.0x70.0mm 3.07x2.78in.	78.0x70.0mm 3.07x2.78in.	72.0x61.0mm 2.83x2.4in.	56.0x50.0mm 2.2x1.97in.	55.0x43.0mm 2.17x1.69in.
Max. RPM Range	4500~5500	4500~5500	4500~5500	4500~5500	4500~5500	4500~5500	4500~5500
Idling RPM Range	750~850	950~1050	1100~1200	1100~1200	1050~1150	1000~1100	1000~1100
Ignition System	C.D.I	C.D.I	C.D.I	C.D.I	C.D.I	C.D.I	C.D.I
Starting System	Electric Or Manual	Electric+Manual Or Manual	Electric+Manual Or Manual	Electric+Manual Or Manual	Electric+Manual Or Manual	Manual	Manual
Steering System	Tiller or Remote	Tiller or Remote	Tiller or Remote	Tiller or Remote	Tiller or Remote	Tiller	Tiller
Trim and Tilt	Gas assist or Electric	Gas assist or Electric	Manual	Manual	Manual	Manual	Manual
Gear Shift	F-N-R	F-N-R	F-N-R	F-N-R	F-N-R	F-N-R	F-N-R
Gear Ratio	2.0	2.33	2.0	1.85	2.08	2.08	2.15
Gear Oil Capacity	610cc	610cc	315cc	315cc	320cc	250cc	195cc
Transom Height	20in. or 25in.	20in. or 22in.	15in. or 20in.	15in. or 20in.	15in. or 20in.	15in. or 20in.	15in. or 20in.
Dry Weight*	115kg	103.5kg	65kg	63.8kg	52kg	38kg	20kg
Alternator Output*	12V, 10A	12V, 10A	12V, 6A	12V, 6A	12V, 6A	12V, 6A	None
Fuel Tank	24L	24L	24L	24L	24L	24L	9L
Propeller* (pitch)	13", 15", 17"	13", 15", 17"	12", 13"	11"	11.25", 12"	8", 10", 11"	8"

*Vary on models

Two-stroke Outboards

Model	T90	T40	T30A	T15	T9.8	T5.8	T3.6	T2.6C
Max. Power	90HP/66.2Kw	40HP/29.4Kw	30HP/22Kw	15HP/11Kw	9.8HP/7.2Kw	5.8HP/4.3Kw	3.6HP/2.64Kw	2.6HP/1.9Kw
Engine type	3-cyl.	2-cyl.	2-cyl.	2-cyl.	2-cyl.	1-cyl.	1-cyl.	1-cyl.
Displacement	1141cc	703cc	496cc	246cc	169cc	102cc	74.6cc	50cc
Bore x Stroke	82.0x72.0mm 3.23x2.83in.	80.0x70.0mm 3.15x2.76in.	72.0x61.0mm 2.83x2.4in.	56.0x50.0mm 2.2x1.97in.	50.0x43.0mm 1.97x1.69in.	55.0x43.0mm 2.17x1.69in.	47.0x43.0mm 1.85x1.69in.	42.0x36.0mm 1.65x1.42in.
Max. RPM Range	4500~5500	4500~5500	4500~5500	4500~5500	5000~6000	4500~5500	4200~5300	4500~5500
Idling RPM Range	750~850	950~1050	1050~1150	950~1050	1150~1250	1000~1100	1450~1550	1100~1200
Ignition System	C.D.I	C.D.I	C.D.I	C.D.I	C.D.I	C.D.I	T.C.I.	T.C.I.
Starting System	Electric Or Manual	Electric+Manual Or Manual	Electric+Manual Or Manual	Manual	Manual	Manual	Manual	Manual
Steering System	Tiller or Remote	Tiller or Remote	Tiller or Remote	Tiller	Tiller	Tiller	Tiller	Tiller
Trim and Tilt	Gas assist or Electric	Electric or Manual	Manual	Manual	Manual	Manual	Manual	Manual
Gear Shift	F-N-R	F-N-R	F-N-R	F-N-R	F-N-R	F-N-R	F-N	F
Gear Ratio	2.0	2.0	2.08	2.08	2.08	2.15	2.08	2.08
Gear Oil Capacity	610cc	430cc	320cc	250cc	320cc	195cc	100cc	45cc
Transom Height	20in. or 25in.	15in. or 20in.	15in. or 20in.	15in. or 20in.	15in. or 20in.	15in. or 20in.	15in. or 20in.	15in.
Dry Weight*	115kg	73.5kg	52kg	35kg	26kg	20kg	14.5kg	9.8kg
Alternator Output*	12V, 10A	12V, 6A	12V, 6A	12V, 6A	None	None	None	None
Fuel Tank	24L	24L	24L	24L	12L	Build-in 2.7L	Build-in 1.5L	Build-in 1.2L
Propeller* (pitch)	13", 15", 17"	12", 13"	11.25", 12"	8", 10", 11"	8.3"	8"	6"	5"

*Vary on models

E.F.I.

4-stroke

Heavy-duty

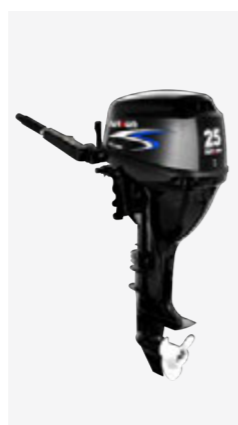
2-stroke



F60



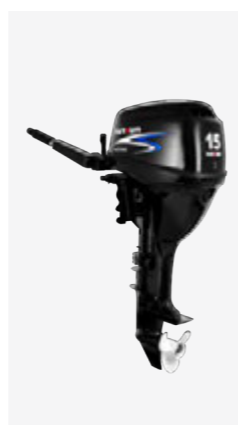
F50



F25



F20A



F15



T75



T60A



T40J



T90



T40



T30A



F40



F30



F9.8



F6A



F5



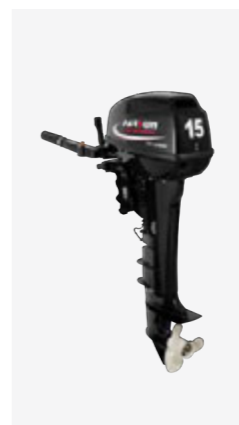
T40G



T25



TE15



T15



T9.8



T5.8



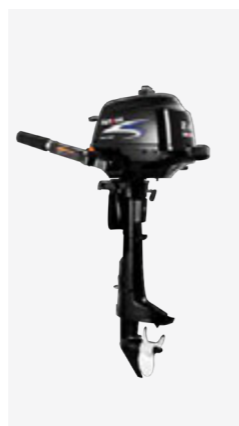
F20



F6



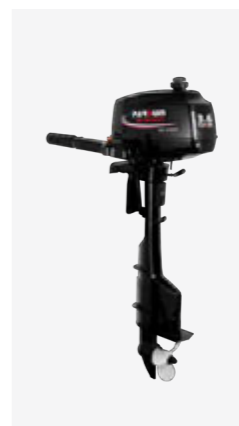
F4



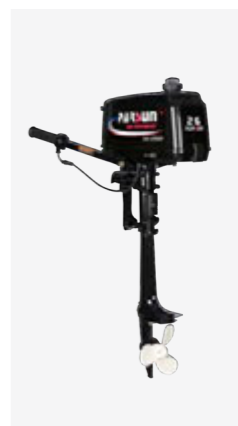
F2.6



TE5



T3.6



T2.6C



Алматы (7273)495-231
Ангарск (3955)60-70-56
Архангельск (8182)63-90-72
Астрахань (8512)99-46-04
Барнаул (3852)73-04-60
Белгород (4722)40-23-64
Благовещенск (4162)22-76-07
Брянск (4832)59-03-52
Владивосток (423)249-28-31
Владикавказ (8672)28-90-48
Владимир (4922) 49-43-18
Волгоград (844)278-03-48
Вологда (8172)26-41-59
Воронеж (473)204-51-73
Екатеринбург (343)384-55-89

Ижевск (3412)26-03-58
Иваново (4932)77-34-06
Иркутск (395)279-98-46
Казань (843)206-01-48
Калининград (4012)72-03-81
Калуга (4842)92-23-67
Кемерово (3842)65-04-62
Киров (8332)68-02-04
Коломна (4966)23-41-49
Кострома (4942)77-07-48
Краснодар (861)203-40-90
Красноярск (391)204-63-61
Курск (4712)77-13-04
Курган (3522)50-90-47
Липецк (4742)52-20-81

Магнитогорск (3519)55-03-13
Москва (495)268-04-70
Мурманск (8152)59-64-93
Набережные Челны (8552)20-53-41
Нижний Новгород (831)429-08-12
Новокузнецк (3843)20-46-81
Ноябрьск (3496)41-32-12
Новосибирск (383)227-86-73
Ноябрьск (3496)41-32-12
Омск (3812)21-46-40
Орел (4862)44-53-42
Оренбург (3532)37-68-04
Пенза (8412)22-31-16
Петрозаводск (8142)55-98-37
Псков (8112)59-10-37

Пермь (342)205-81-47
Ростов-на-Дону (863)308-18-15
Рязань (4912)46-61-64
Самара (846)206-03-16
Саранск (8342)22-96-24
Санкт-Петербург (812)309-46-40
Саратов (845)249-38-78
Севастополь (8692)22-31-93
Симферополь (3652)67-13-56
Смоленск (4812)29-41-54
Сочи (862)225-72-31
Ставрополь (8652)20-65-13
Сыктывкар (8212)25-95-17
Сургут (3462)77-98-35
Тамбов (4752)50-40-97

Тверь (4822)63-31-35
Тольяти (8482)63-91-07
Томск (3822)98-41-53
Тула (4872)33-79-87
Тюмень (3452)66-21-18
Улан-Удэ (3012)59-97-51
Ульяновск (8422)24-23-59
Уфа (347)229-48-12
Хабаровск (4212)92-98-04
Чебоксары (8352)28-53-07
Челябинск (351)202-03-61
Череповец (8202)49-02-64
Чита (3022)38-34-83
Якутск (4112)23-90-97
Ярославль (4852)69-52-93

Киргизия (996)312-96-26-47

Россия (495)268-04-70

Казахстан (772)734-952-31